

FWE HONG KONG 2024



23rd – 24th November 2024
AsiaWorld-Expo
Fact Sheet

Opening Hours

09:00 – 19:00 (Expo Starts at 10:00)

Exhibition Space

22,720 sqm (Hall 3, 6, 8 & 10)

Facts & Figures of the 3rd Edition

70

fitness & wellness related brands
(from 2 countries & regions)

12,000

visitors
(from 54 countries & regions)

Expecting

90+

brands
in fitness & wellness industry

18,000+

visitors
over the weekend

6 Themed Zones

- Athleisure & Lifestyle
- F&B (with onsite food processing)
- Nutrition & Performance
- Prevention & Recovery
- Tech & Innovation
- Travel & Adventure

Participation Options

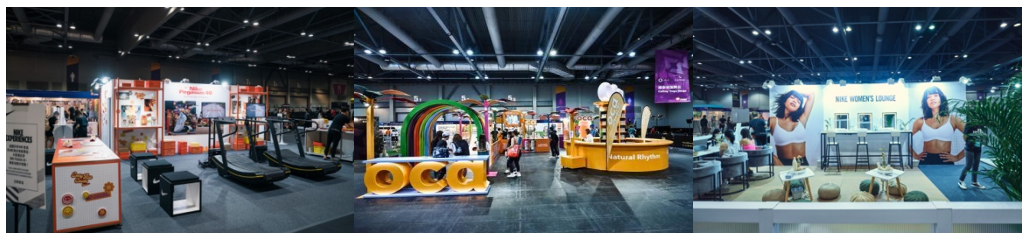
A. Raw Space (36 sqm up) – custom-built

Participation Fee:

HKD1,000/sqm

Entitlement details:

Space Only



B. Standard Booth (3m x 3m) – ready-to-use booth with furniture



Participation Fee:

HKD14,000/9 sqm*

Entitlement details (9 sqm):

9 sqm carpet; 1 info counter;

2 chairs, 1 socket, 2 spotlights,

1 wastepaper basket; 1 fascia board

C. F&B Booth (3m x 4m) – ready-to-use setting with 1m x 3m storage included

Participation Fee:

HKD14,000/12 sqm*

Entitlement details (12 sqm):

12 sqm carpet; 1 info counter;

2 chairs, 1 socket, 2 spotlights,

1 wastepaper basket; 1 fascia

board; 3 sqm storage



*corner surcharge at HKD2,000 each

Organiser

Hybrid Group Limited

Website

fitnesswellnessexpo.hk

Contact Details

Hybrid Group Limited

+852 3589 6333

partnership@hybridgroupasia.com